



Marleton Cross Limited Trading as **The MX Group**

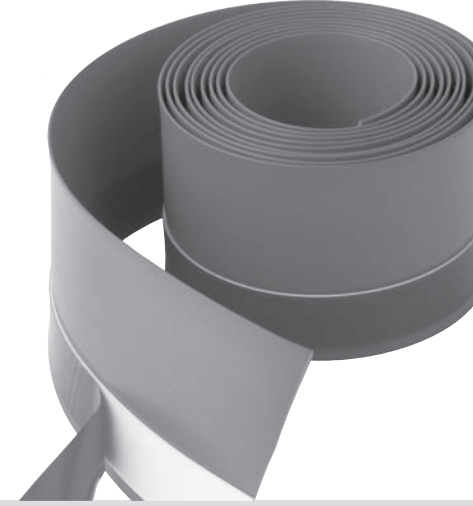
Alpha Close, Delta Drive, Tewkesbury Industrial Estate, Tewkesbury, Gloucestershire GL20 8JF
Tel: 01684 293311 Fax: 01684 293900 Email: sales@mx-group.com www.mx-group.com

TRADE DESCRIPTIONS ACT

Variations in terms of colour finish, materials and all other aspects of appearance may occur on occasions, either through non-availability of materials or due to our policy of continuing technical improvement. Therefore the Company reserves the right to change specification or withdraw products from this list without prior notice being given.

Installation Instructions

Flexi Seal Strip



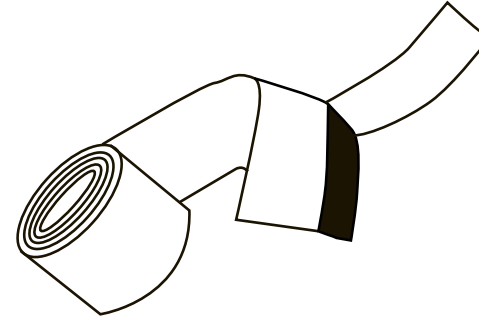
657FQ 070220SD

Technical Help

Technical Service Line: 01684 293311
Open Mon-Fri 9am-5pm

Parts Supplied

A Flexi Seal Strip x 1
IPA Wipe x 1



Before you Start

Please read these instructions fully before starting. Although these instructions are comprehensive we always recommend that a technically competent installer undertake the installation.

This product is intended as a flexible tiling upstand and should be fitted to the side of the shower tray or bath adjacent the walls only.

Tools and Materials Required (not supplied)

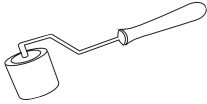
Damp Cloth



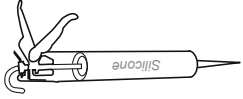
Scissors



Small Roller

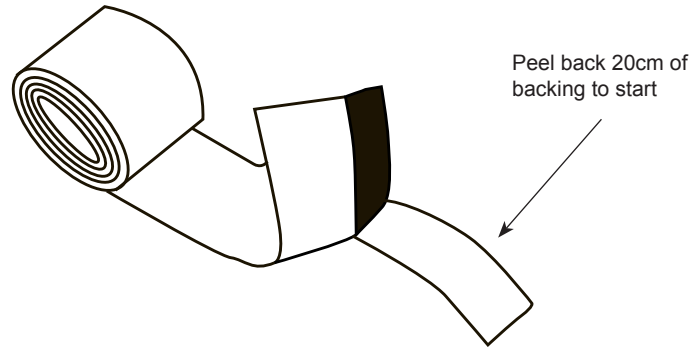


Clear Silicone Sealant



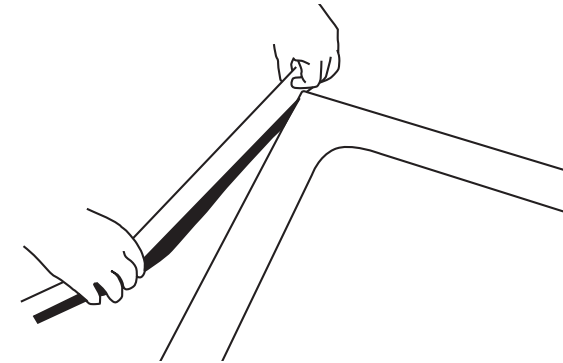
Installation

1



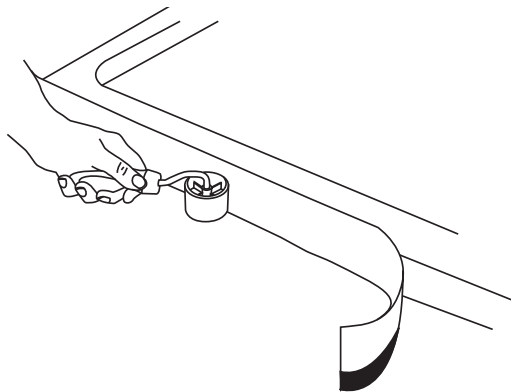
1. Remove protective film from the edge of the tray or bath to which the seal strip is to be attached but initially leave it over the base of the tray to protect the trays surface.
2. Wipe the surfaces clean where the strip will be attached first with a clean damp cloth, allow to dry and then wipe with the IPA wipe supplied in the kit.
3. Determine the length of strip required to seal around the shower tray and cut to length with scissors (Ensure you cut at least 20mm longer than needed).

4



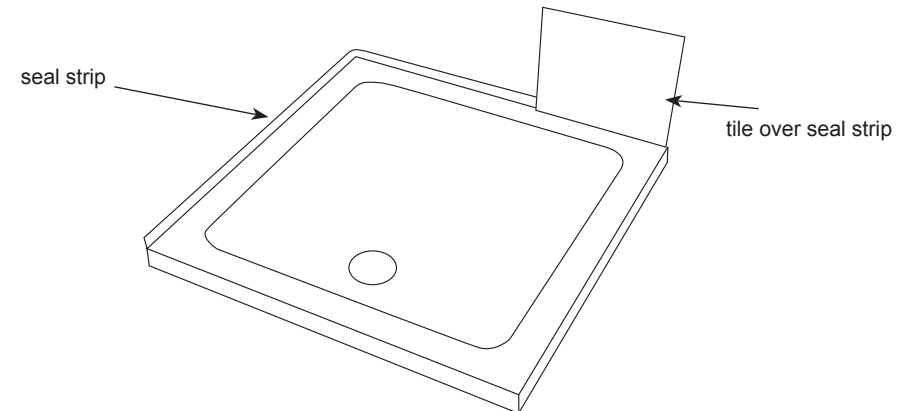
4. Peel back approximately 20cm of backing from the adhesive strip.
5. Attach to the outer edge of the area with the top edge of the adhesive strip level with the top. Ensure that it is square

6



6. Using a small roller, or other appropriate tool, roll the seal strip so that it attaches firmly to the edge of the tray removing any bubbles or creases, paying particular attention to the corners.
7. Gradually remove the cover strip in sections and roll on the seal so it attaches firmly and square to the edge of the tray, making sure there are no gaps between tray and seal strip. Trim off any excess strip.

8



8. Install the shower tray or bath in the correct position and tile over the seal strip.
 9. Put a protective bead of silicone or other suitable flexible sealant between the tray and the tile, ensuring it does not come into contact with the adhesive material on the flexi seal strip.
- NB: NO NOT AFFIX THE FLEXI SEAL STRIP DIRECTLY TO THE WALL OR TILE/BOARDING.**